



## **Stubton** Neighbourhood Plan



2014 TO 2026

# Stubton Neighbourhood Plan

- ▣ Funding for Professional Services
- ▣ Broad Evidence Base
- ▣ Neighbourhood Plan Flowchart
- ▣ Consultants
- ▣ Reasons for Writing a Plan
- ▣ Consultation
- ▣ Setting Aims and Objectives
- ▣ Policy
- ▣ Landscape Character Assessment
- ▣ Supplementary Documents
- ▣ The Stages leading to the Adoption of the Plan
- ▣ Summary

# Stubton Neighbourhood Plan

- ▣ **Funding for Professional Services**
- ▣ Broad Evidence Base
- ▣ Neighbourhood Plan Flowchart
- ▣ Consultants
- ▣ Reasons for Writing a Plan
- ▣ Consultation
- ▣ Setting Aims and Objectives
- ▣ Policy
- ▣ Landscape Character Assessment
- ▣ Supplementary Documents
- ▣ The Stages leading to the Adoption of the Plan
- ▣ Summary

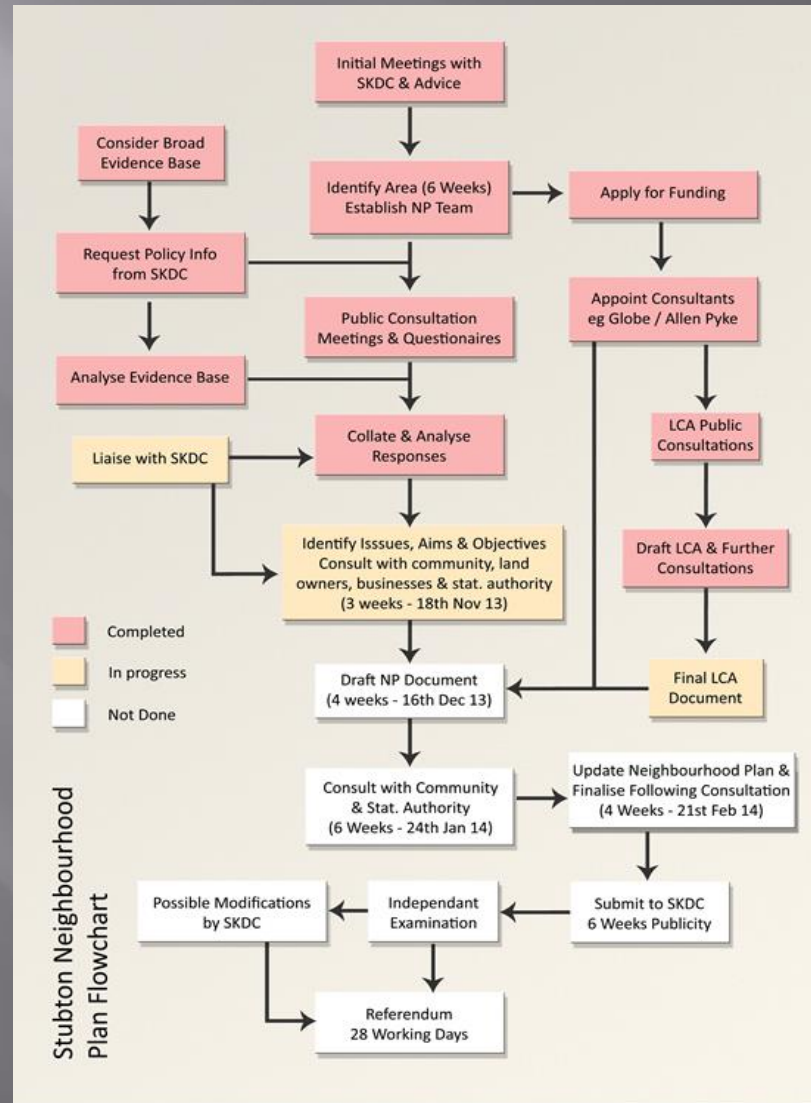
# Stubton Neighbourhood Plan

- ▣ Funding for Professional Services
- ▣ **Broad Evidence Base**
- ▣ Neighbourhood Plan Flowchart
- ▣ Consultants
- ▣ Reasons for Writing a Plan
- ▣ Consultation
- ▣ Setting Aims and Objectives
- ▣ Policy
- ▣ Landscape Character Assessment
- ▣ Supplementary Documents
- ▣ The Stages leading to the Adoption of the Plan
- ▣ Summary

# Stubton Neighbourhood Plan

- ▣ Funding for Professional Services
- ▣ Broad Evidence Base
- ▣ **Neighbourhood Plan Flowchart**
- ▣ Consultants
- ▣ Reasons for Writing a Plan
- ▣ Consultation
- ▣ Setting Aims and Objectives
- ▣ Policy
- ▣ Landscape Character Assessment
- ▣ Supplementary Documents
- ▣ The Stages leading to the Adoption of the Plan
- ▣ Summary

# Flow Chart



# Stubton Neighbourhood Plan

- ▣ Funding for Professional Services
- ▣ Broad Evidence Base
- ▣ Neighbourhood Plan Flowchart
- ▣ **Consultants**
- ▣ Reasons for Writing a Plan
- ▣ Consultation
- ▣ Setting Aims and Objectives
- ▣ Policy
- ▣ Landscape Character Assessment
- ▣ Supplementary Documents
- ▣ The Stages leading to the Adoption of the Plan
- ▣ Summary

# Stubton Neighbourhood Plan

- ▣ Funding for Professional Services
- ▣ Broad Evidence Base
- ▣ Neighbourhood Plan Flowchart
- ▣ Consultants
- ▣ **Reasons for Writing a Plan**
- ▣ Consultation
- ▣ Setting Aims and Objectives
- ▣ Policy
- ▣ Landscape Character Assessment
- ▣ Supplementary Documents
- ▣ The Stages leading to the Adoption of the Plan
- ▣ Summary



# Stubton Neighbourhood Plan

- ▣ Funding for Professional Services
- ▣ Broad Evidence Base
- ▣ Neighbourhood Plan Flowchart
- ▣ Consultants
- ▣ Reasons for Writing a Plan
- ▣ **Consultation**
  - ▣ Setting Aims and Objectives
  - ▣ Policy
  - ▣ Landscape Character Assessment
  - ▣ Supplementary Documents
  - ▣ The Stages leading to the Adoption of the Plan
  - ▣ Summary

# Consultation

- ▣ 1. What do you most value about Stubton and its environs?
- ▣ 2. What do you least value?
- ▣ 3. What outdoor activities do you enjoy in Stubton and the local area?
- ▣ 4. What would you like to see included in the Neighbourhood Plan?

# Stubton Neighbourhood Plan

- ▣ Funding for Professional Services
- ▣ Broad Evidence Base
- ▣ Neighbourhood Plan Flowchart
- ▣ Consultants
- ▣ Reasons for Writing a Plan
- ▣ Consultation
- ▣ **Setting Aims and Objectives**
- ▣ Policy
- ▣ Landscape Character Assessment
- ▣ Supplementary Documents
- ▣ The Stages leading to the Adoption of the Plan
- ▣ Summary

## 5 Aims and Objectives

The responses to the community engagement questionnaires were analysed and grouped under seven main category headings. From these, a set of aims and objectives for the Neighbourhood Plan were developed.

### Issues raised in community engagement questionnaire

#### Environment

peace quiet and tranquillity  
Preservation of peace, quiet and tranquillity

#### Countryside and wildlife

Views of the countryside - big skies  
Rural setting, unspoilt countryside  
Access to open countryside  
Landscape character  
Wildlife in the village and surrounding countryside  
Presence of wildlife  
Improve access to countryside and maintain existing access  
maintain unspoilt vistas and preservation of landscape character  
Protection of wildlife and the natural environment  
Punitive style footpaths closed by landowners  
Lack of dialogue between landowners and locals  
Enjoyment of, and appreciation of views and landscapes, historic buildings and feeling of space

#### Built Environment

Concerns of industrial type development nearby e.g. windfarms  
Views to, and the presence of historic buildings  
Lack of new housing development  
Lack of anything industrial  
Reticence on: Industrial development e.g. windfarms  
Commercial  
New domestic buildings  
Secure sustainability of village through limited and sympathetic infill  
Negative impact of any development which could change the peaceful rural environment and views  
Buildings unsympathetic to rural neighbourhood  
Rich heritage of buildings

#### Village Ethos

Sense of real community – community spirit  
Pride in East Kent Village award and overall tidiness  
Idyllic feel of village  
Low traffic, low crime and little anti-social behaviour  
Sense of place  
Visitor information footpaths, views and village history on display boards

#### Recreation

Walking in the countryside  
Cycling  
Dog walking  
Horse riding  
Cycling on bridle paths  
Birdwatching  
A park or grassed area  
new footpath to Clingdale along side of the road

#### Services

Improve local facilities:  
Public transport  
Mobile gas  
Mobile drainage

#### Impact of traffic

Speeding traffic through the village  
large vehicles causing damage to roads and verges  
Designation of roadsides verges and potholes  
Traffic calming

### Aims and Objectives

**Protecting the peace, quiet and tranquillity of the village environment**

**Protecting greenspace, the landscape character and supporting nature conservation and biodiversity**

**Supporting sensitive development which protects and enriches the landscape and built setting within the village and its environs**

**Enhancing the life experience of Stubton residents by community involvement**

**Improving access to countryside and recreational opportunities for residents and visitors of all ages to enjoy**

**Seeking ongoing improvements in public transport, utility infrastructure and internet performance**

**Promoting measures to reduce the impact of traffic speed, damage and noise**

# Stubton Neighbourhood Plan

- ▣ Funding for Professional Services
- ▣ Broad Evidence Base
- ▣ Neighbourhood Plan Flowchart
- ▣ Consultants
- ▣ Reasons for Writing a Plan
- ▣ Consultation
- ▣ Setting Aims and Objectives
- ▣ **Policy**
- ▣ Landscape Character Assessment
- ▣ Supplementary Documents
- ▣ The Stages leading to the Adoption of the Plan
- ▣ Summary

# Stubton Neighbourhood Plan

- ▣ Funding for Professional Services
- ▣ Broad Evidence Base
- ▣ Neighbourhood Plan Flowchart
- ▣ Consultants
- ▣ Reasons for Writing a Plan
- ▣ Consultation
- ▣ Setting Aims and Objectives
- ▣ Policy
- ▣ **Landscape Character Assessment**
- ▣ Supplementary Documents
- ▣ The Stages leading to the Adoption of the Plan
- ▣ Summary

Allen Pyke Associates

**STUBTON PARISH  
LANDSCAPE CHARACTER  
ASSESSMENT**



Prepared on behalf of

**STUBTON PARISH COUNCIL**

Ref: 2448-S-RE-01E – FINAL

Date: November 2013

# Stubton Neighbourhood Plan

- ▣ Funding for Professional Services
- ▣ Broad Evidence Base
- ▣ Neighbourhood Plan Flowchart
- ▣ Consultants
- ▣ Reasons for Writing a Plan
- ▣ Consultation
- ▣ Setting Aims and Objectives
- ▣ Policy
- ▣ Landscape Character Assessment
- ▣ **Supplementary Documents**
  - ▣ The Stages leading to the Adoption of the Plan
  - ▣ Summary



# Supplementary Documents

- ▣ 1. Statement of Consultation
- ▣ 2. Basic Conditions Statement
- ▣ 3. Strategic Environmental Assessment  
Screening Report

# Stubton Neighbourhood Plan

- ▣ Funding for Professional Services
- ▣ Broad Evidence Base
- ▣ Neighbourhood Plan Flowchart
- ▣ Consultants
- ▣ Reasons for Writing a Plan
- ▣ Consultation
- ▣ Setting Aims and Objectives
- ▣ Policy
- ▣ Landscape Character Assessment
- ▣ Supplementary Documents
- ▣ **The Stages leading to the Adoption of the Plan**
- ▣ Summary

# **The Stages leading to the Adoption of the Plan**

- ▣ 1. Submission to the Local Authority for approval
- ▣ 2. Scrutiny by an External Independent Examiner
- ▣ 3. Minor amendments
- ▣ 4. The Referendum

# Stubton Neighbourhood Plan

- ▣ Funding for Professional Services
- ▣ Broad Evidence Base
- ▣ Neighbourhood Plan Flowchart
- ▣ Consultants
- ▣ Reasons for Writing a Plan
- ▣ Consultation
- ▣ Setting Aims and Objectives
- ▣ Policy
- ▣ Landscape Character Assessment
- ▣ Supplementary Documents
- ▣ The Stages leading to the Adoption of the Plan
- ▣ **Summary**



## Stubton Neighbourhood Plan



2014 TO 2026