

Bassetlaw District Council Neighbourhood Planning Support

James Green
Community Planning Officer

NORTH NOTTINGHAMSHIRE



Bassetlaw
DISTRICT COUNCIL
— North Nottinghamshire —



Co-operative Councils
Innovation Network



Neighbourhood Planning in Bassetlaw



- 20 designated Neighbourhood areas
 - 3 'made' Plans
 - 2 Plans awaiting examination
 - 4 Plans at Draft
-
- 4 more areas preparing designation

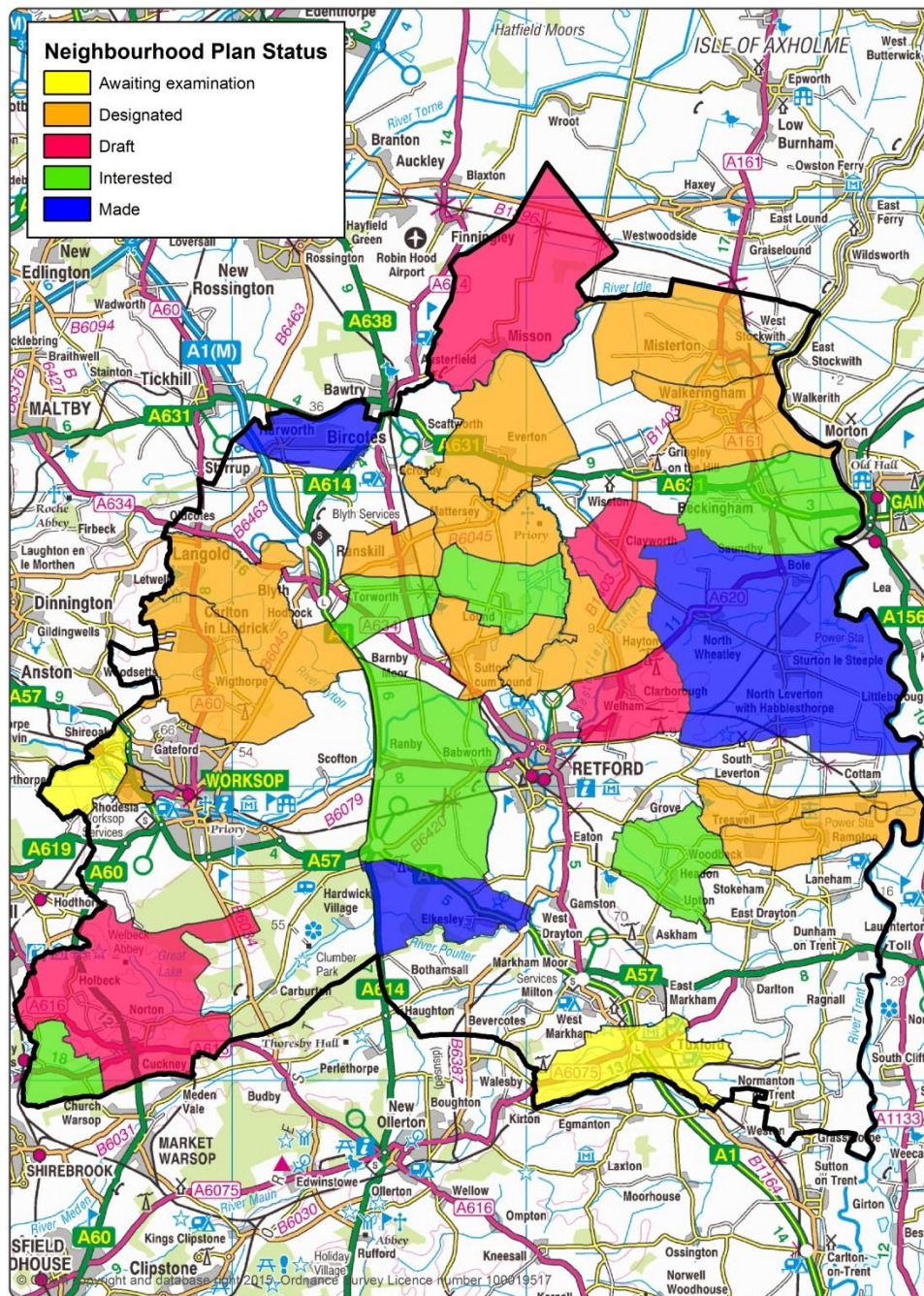


Bassetlaw
DISTRICT COUNCIL
— North Nottinghamshire —



Co-operative Councils
Innovation Network





Bassetlaw
DISTRICT COUNCIL
— North Nottingham



Bassetlaw
DISTRICT COUNCIL
North Nottingham



Our Approach

- Encourage communities to undertake neighbourhood planning.
- 2 Offices supporting (do have other responsibilities).
- Attend meetings and consultation events.
- Produce documents for groups (sometimes paid work).



Our Approach continued



- Funding used to pay for GIS Officer time to produce maps.
- Consultants used to help groups write Plans.
- Print Department cover printing (at cost).
- Policy and DM Officers comment on Plans at Draft and Submission consultation.

Funding

- Locality - www.mycommunity.org.uk
 - Technical support: for complex areas, and
 - Grant payments: up to £9,000 per neighbourhood area.
- Awards for All - www.biglotteryfund.org.uk/global-content/programmes/england/awards-for-all-england
 - Grants available up to £10,000



Bassetlaw
DISTRICT COUNCIL
— North Nottinghamshire —



Co-operative Councils
Innovation Network



The Benefits

- Brought local communities together.
- Community projects coming out of Plans – CIL.
- Better planning outcomes.



Bassetlaw
DISTRICT COUNCIL
— North Nottinghamshire —

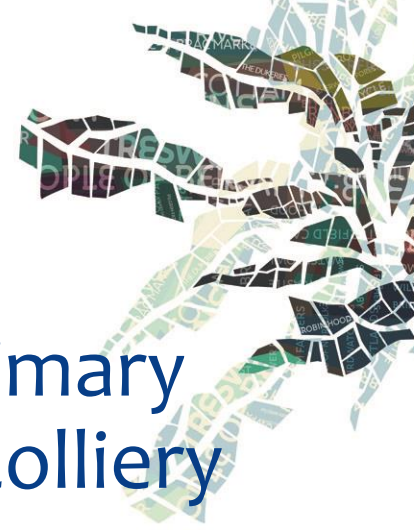


Co-operative Councils
Innovation Network



Harworth & Bircotes NP

- Allocation of 750 new homes, new primary school and community space on old Colliery site.
- Regeneration of Town Centre.
- Identifies and protects important environmental assets.



Bassetlaw
DISTRICT COUNCIL
— North Nottinghamshire —



Co-operative Councils
Innovation Network



Elkesley NP

- Dealt with contentious development site – working with landowner.
- Promotes development of local employment opportunities.
- Identifies and protects community assets.
- Numerous community projects
 - Protecting natural beauty spot
 - Creation of new footpaths
 - New changing rooms facility – HCA funding



Bassetlaw
DISTRICT COUNCIL
— North Nottinghamshire —



Co-operative Councils
Innovation Network



Lessons Learnt

- Seek advice early on whether a Neighbourhood Plan is right for your community.
- No need for mini Local Plan.
- Forget old poor relations (particularly with LPA).
- Use resources and guidance available.
- No need to reinvent the wheel.
- Don't lose momentum.



To Sum Up...



Its an uphill struggle...

...but the view from the top is worth it!



Bassetlaw
DISTRICT COUNCIL
— North Nottinghamshire —



Co-operative Councils
Innovation Network



Thank you for listening.



Bassetlaw
DISTRICT COUNCIL
— North Nottinghamshire —



Co-operative Councils
Innovation Network

